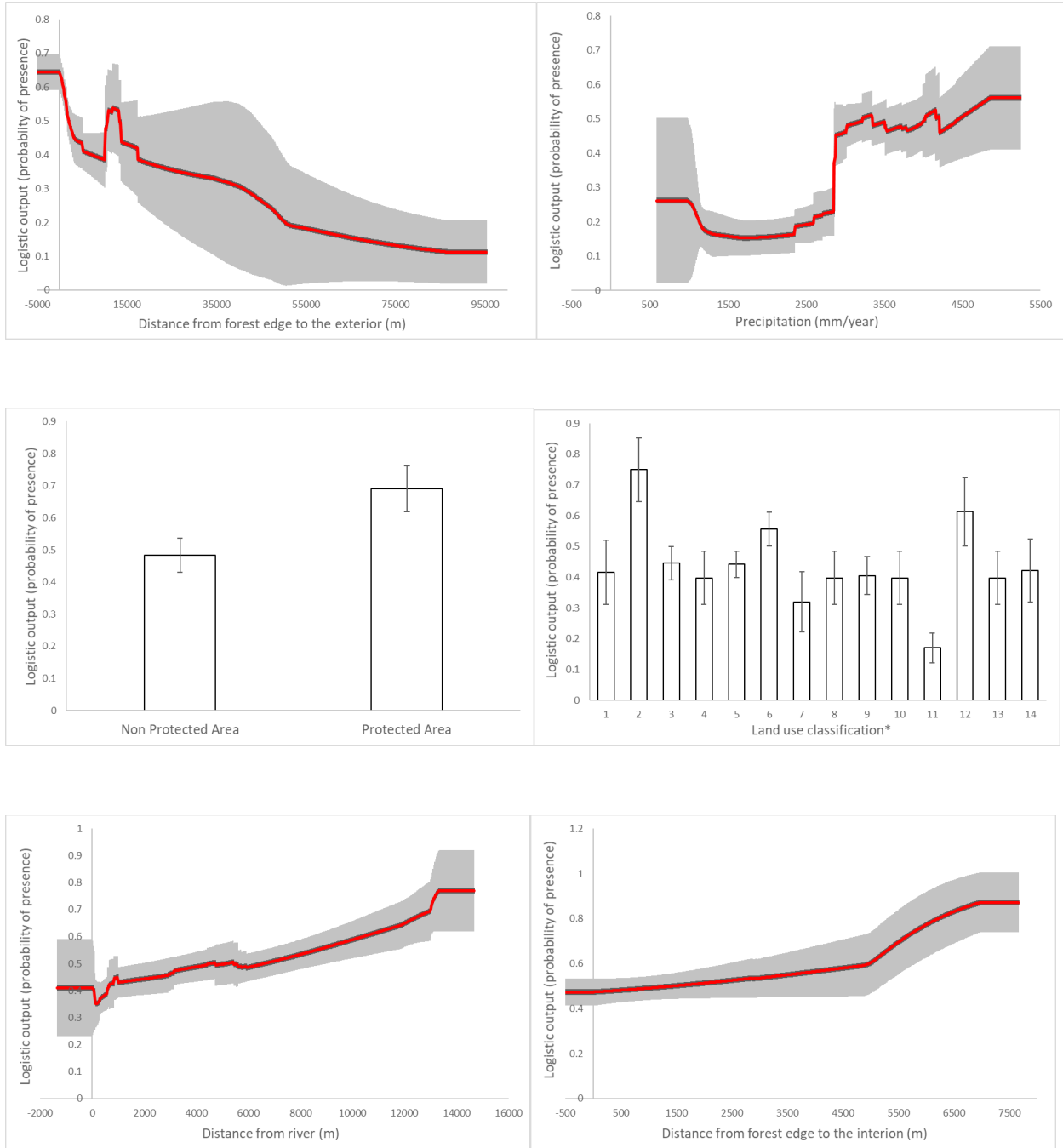
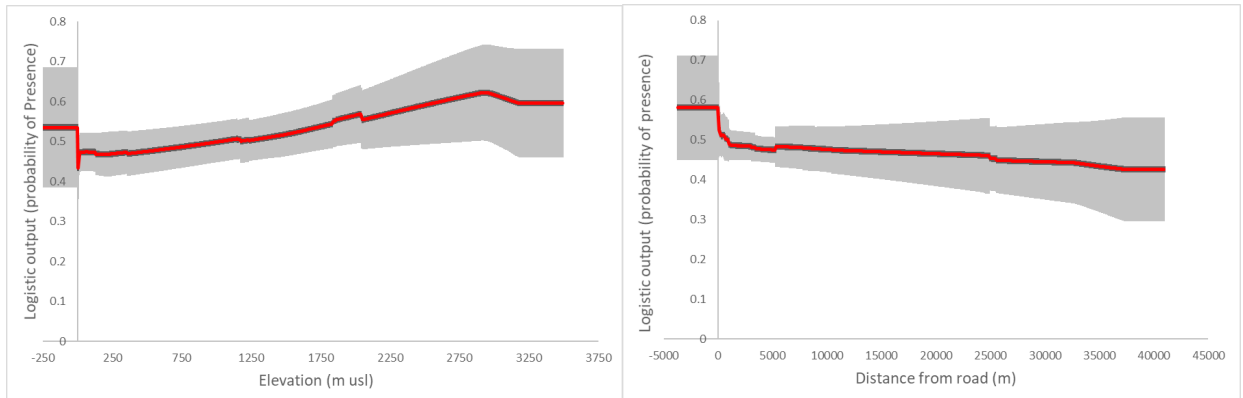


**S2 Fig. Response curves of the probability of Javan leopard presence as a function of environmental variables.** The curves show the mean response of the 10 replicates (red) and associated one standard deviation (grey area, error bar for categorical variables).





\* 1 Primary forest, 2 Secondary forest, 3 Mangrove, 4 Peat forest, 5 Production forest, 6 Plantation, 7 Settlement, 8 Mining, 9 Mixed agriculture, 10 Savanna, 11 Padi field, 12 Shrub, 13 Fisheries, 14 Openland