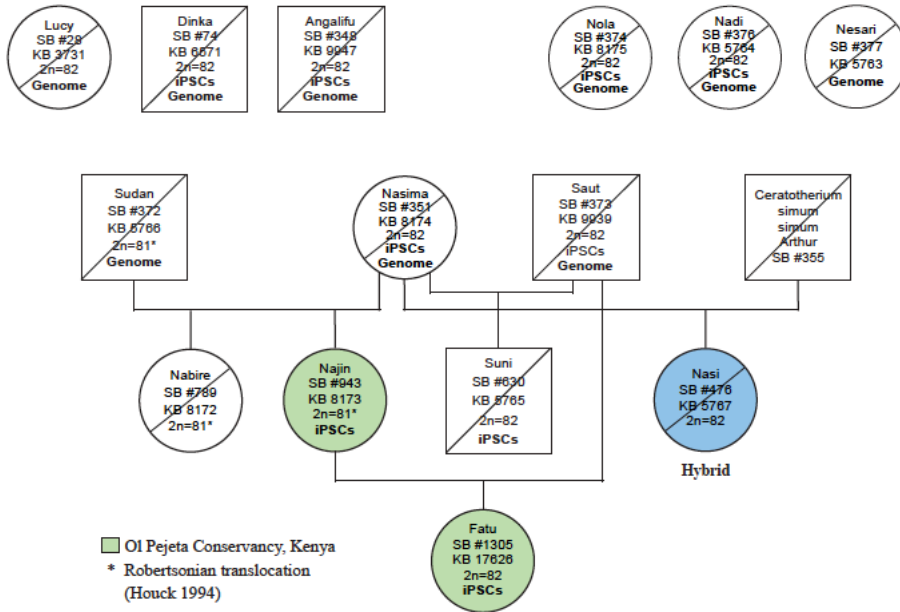


Pedigree of NWR cell lines (*Ceratotherium simum cottoni*)



Supplementary Figure 1: Pedigree of genetic material available for the northern white rhinoceros (*Ceratotherium simum cottoni*) in the Frozen Zoo®. Those individuals that were used for genetic diversity analysis by Tunstall et al 2018 are designated with “genome” and those that have been reprogrammed are designated by “iPSC”. The chromosome number provided for each individual from the Frozen Zoo® is indicated with the 2n # and was used as reference for each cell line.